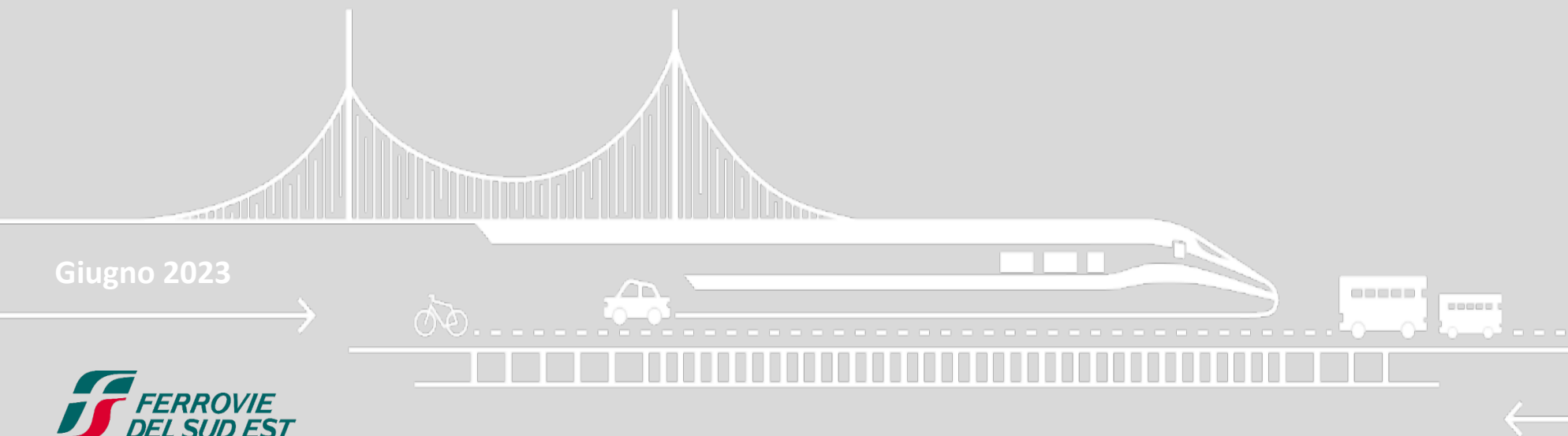


Allegato 3

PIANO DI UTILIZZO DELLA STAZIONE MUNGIVACCA

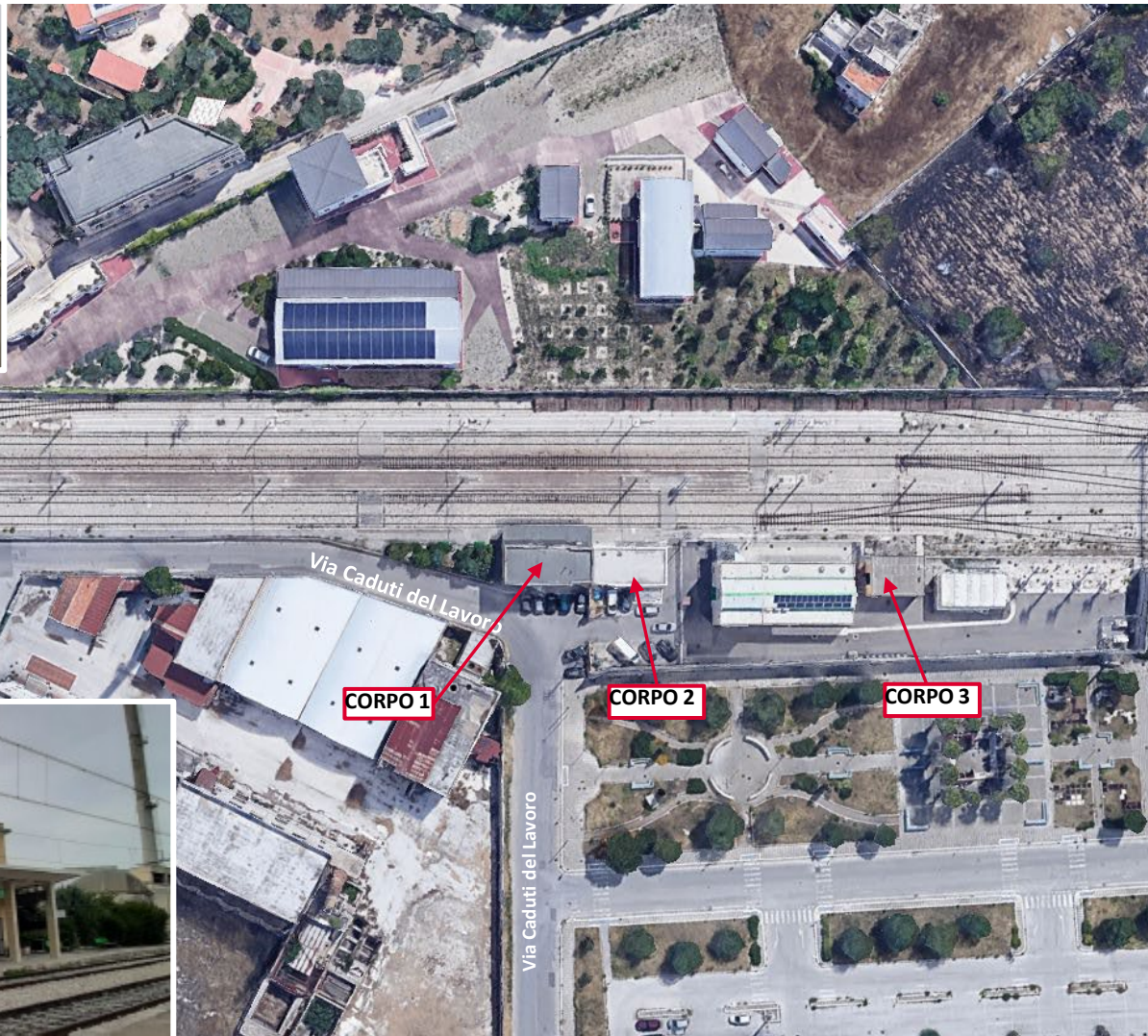
Giugno 2023



PLANIMETRIA GENERALE



CORPO 1 - FABBRICATO VIAGGIATORI

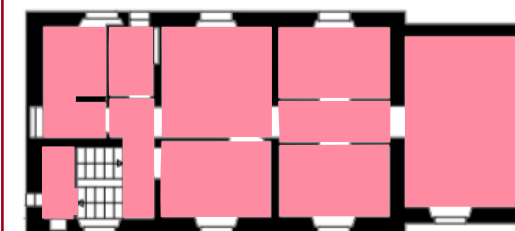


CORPO 2 - SALA RELE'

CORPO 1 – FABBRICATO VIAGGIATORI

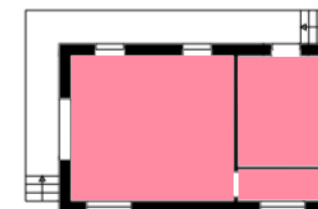
CORPO 2 – SALA RELE'

CORPO 1 – FABBRICATO VIAGGIATORI

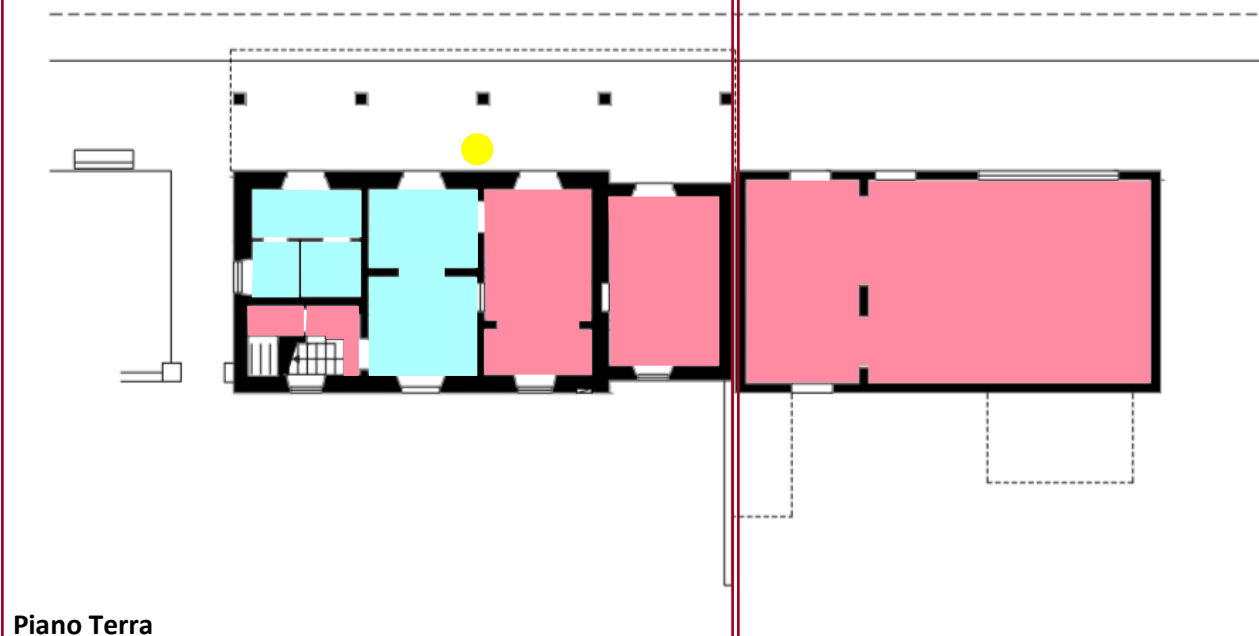


Piano Primo

CORPO 3 – SPOGLIATOIO - DEPOSITO







Piano Terra




























Piano Terra

	Funzione		Spazio Totale			Spazio Occupato		Spazio Libero	
			Superficie	mq		mq		mq	
A		Area funzionale al servizio ferroviario – Corpo 1 P.T – P1°	Superficie	mq	124	mq	124	mq	0
A		Area funzionale al servizio ferroviario – Corpo 2	Superficie	mq	85	mq	85	mq	0
A		Area funzionale al servizio ferroviario – Corpo 3	Superficie	mq	45	mq	0	mq	45
B	●	Biglietteria Self Service	Tot.	n.	1				
B		Sala d'attesa e spazio ad uso pubblico	Superficie	mq	34	mq	34	mq	0



-  STAZIONE FERROVIA FSE BARI - MUNGIVACCA
-  STAZIONE FERROVIARIA FSE BARI - MUNGIVACCA
-  STAZIONE CENTRALE FSE
-  STAZIONE FERROVIARIA FSE BARI SUD - EST

-  AUTONOLEGGIO
-  LINEA FERROVIARIA SUD - EST

IDENTIKIT STAZIONE		ACCESSIBILITA'				OFFERTA COMMERCIALE E DISPONIBILITA' INFRASTRUTTURALE	
BARI - MUNGIVACCA		ASSISTENZA AI VIAGGIATORI CON DISABILITA' E A RIDOTTA MOBILITA'				VOLUMI DI TRAFFICO	52 Treni pass./gg
Via caduti del lavoro BARI 70126 			<i>Si con preavviso</i>			SMART STATION	
IMPRESSE FERROVIARIE	FERROVIE SUD - EST	FACILITIES					Accessi automatizzati 
ALTRE IMPRESSE DI TRASPORTO	NESSUNA		Sistemi di informazione al pubblico visiva				WI-FI STATION 
		ACCESSIBILITA' AI BINARI				LUNGHEZZA MARCIAPIEDI	
							1° BINARIO 131 m
		1° binario 					2° e 3° BINARIO 170 m
		2° binario 					4° e 5° BINARIO (SERVIZIO) 155 m
		3° binario 					
		 Accessibilità motoria	 Accessibilità uditiva	 Accessibilità visiva	 H 55	LARGHEZZA MEDIA MARCIAPIEDI	
						1° BINARIO	2,73 m
						2° E 3° BINARIO	3,80 m
						4° e 5° BINARIO (SERVIZIO)	3,45 m